



## Electrical, Voice- and Datacom Identification

BBP12 Label Printer



## BBP12 Label printer

The BBP12 Label Printer is an entry level benchtop label printer for cable, component, product and laboratory sample identification that offers great value for money. The **compact** BBP12 offers a high print speed of **101.6 mm/second** and can handle a **wide range** of highly durable and specialised Brady **identification labels**.

### Simple, efficient design

- Compact in size, fits on every desk
- Default Ethernet Connectivity, allowing you to work in a network
- Connect any universal keyboard via USB 2.0 to work in stand-alone mode
- Full colour LCD Display and intuitive software interface are simple to use, so no extensive training is required
- Simple calibration menu with easy 1-2-3 step printing
- Best price/quality in the market for low volume printing
- Comes with a free unwinder accessory to print larger label rolls

### Performance

- Prints a wide range of identification labels from 10 mm up to 112 mm wide
- Standard 300 dpi print quality allowing accurate image & barcode positioning on small labels
- With its powerful 32 bit processor and its extended memory it can print up to 101.6 mm / sec
- The printer supports the industry-standard Zebra® and Eltron® programming languages
- Print time and date on to your labels via the “Real time clock feature”



25.40 mm small core materials designed specifically for the BBP12 Label Printer.  
Unwinder included for larger quantity bulk 76 mm core rolls.

[Scan or click the QR code](#)



While the BBP12 label printer primarily uses 25.40 mm core materials for low to medium volume printing, an unwinder is available should high volume printing be needed.

## Versatile labelling options



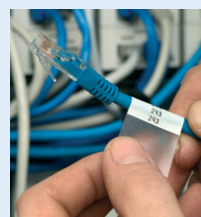
Circuit board labels



Asset tracking labels



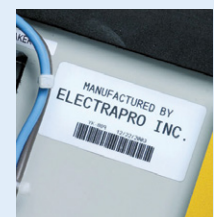
Voice & data communications



Wire marker labels & sleeves



General purpose labels



...And more!

## Printer specifications

The Brady BBP12 label printer is a compact, reliable, affordable entry level thermal transfer benchtop printer. Ideal for customers requiring low volume printing on lots of different materials within the electrical, voice and datacom, LAB and specialized electronics markets. It allows you to print labels, tapes, cable markers, sleeves and much more. This printer comes with a free Brady WorkStation Basic Design Software Suite, enabling you to immediately start designing professional labels.

<b>Application</b>	Asset tracking Barcode labelling Laboratory labelling Wire and cable labelling
<b>Recommended Throughput Operational Hours</b>	8 hours/5 days
<b>Recommended Usage per Day</b>	500
<b>Software Compatibility</b>	Brady Workstation Windows based driver for 3rd party software use
<b>Colour Capability</b>	Monocolour
<b>Connectivity</b>	Ethernet, Serial, USB
<b>Cutter</b>	None
<b>Hardware Options</b>	Peel & Present, Universal Keyboard, Cutter (factory installed option)
<b>Flash Memory</b>	128 MB (Flash), 64 MB (SDRAM), SD Flash memory card up to 32 GB
<b>Memory - RAM/Flash</b>	128 MB
<b>Max Print Width</b>	105.60 mm
<b>Stand-alone Printing (Detached from PC)</b>	Stand-alone & Peripheral
<b>Print Speed (mm/sec)</b>	101.60 mm/s
<b>Print Technology</b>	Thermal Transfer
<b>Stand-alone Printing (Detached from PC)</b>	Stand-alone & Peripheral
<b>Materials Supported</b>	Nylon Cloth, Paper, Polyester, Polyethylene, Polyimide, Polyolefin (Sleeves), Polypropylene, Thermoplastic polyether-polyurethane, Vinyl, Vinyl Cloth, Outdoor Vinyl, Self-laminating Vinyl
<b>Bar Code Capability</b>	Code 39; Code 39 with check digit; Code 93; Code 128UCC; Code 128 subset A, B, C; Codabar; Interleave 2 of 5; Interleaved 2 of 5 with check digit; EAN-8; EAN-13; EAN-128; UPC-A; UPC-E; MSI; MSI with check digit; PLESSEY; POSTNET; Logmars; Code 11; Code 49; China post; ITF14; TELEPEN; TELEPENN; PLANET; Deutsche Post Identcode; Deutsche Post Leitcode; GS1 DataBar; GS1 DataMatrix; Maxicode; AZTEC; PDF417; QR Code; Micro PDF 417
<b>Approval/Compliance</b>	UL; cUL; CE; RoHS; EAC
<b>Dimensions</b>	202.00 mm W x 173.00 mm H x 258.00 mm D
<b>Weight (kg)</b>	2.5

## BBP12 printer part numbers

Article No.	Order Reference	Description
195966	BBP12-EU+U+CUTTER	BBP12 Label printer 300 dpi - EU with Cutter and Unwinder
195566	BBP12-EU+UNWINDER	BBP12 Label printer 300 dpi - EU with Unwinder
306867	BBP12-EU-U-C-LABS	BBP12 Label printer 300 dpi - EU with Cutter, Unwinder and Brady Workstation LAB Suite
198594	BBP12-EU-U-C-PWID	BBP12 Label printer 300 dpi - EU with Cutter, Unwinder and Brady Workstation PWID Suite
306866	BBP12-EU-U-LABS	BBP12 Label printer 300 dpi - EU with Unwinder and Brady Workstation LAB Suite
198595	BBP12-EU-U-PWID	BBP12 Label printer 300 dpi - EU with Unwinder and Brady Workstation PWID Suite
302670	BBP12-SPS-EU	BBP12 Label printer 300 dpi - EU with Unwinder, Barcode Reader and Brady Workstation Scan & Print Suite
302671	BBP12-SPS-UK	BBP12 Label printer 300 dpi - UK with Unwinder, Barcode Reader and Brady Workstation Scan & Print Suite
195967	BBP12-UK+U+CUTTER	BBP12 Label printer 300 dpi - UK with Cutter and Unwinder
195567	BBP12-UK+UNWINDER	BBP12 Label printer 300 dpi - UK with Unwinder
306869	BBP12-UK-U-C-LABS	BBP12 Label printer 300 dpi - UK with Cutter, Unwinder and Brady Workstation LAB Suite
198599	BBP12-UK-U-C-PWID	BBP12 Label printer 300 dpi - UK with Cutter, Unwinder and Brady Workstation PWID Suite
306868	BBP12-UK-U-LABS	BBP12 Label printer 300 dpi - UK with Unwinder and Brady Workstation LAB Suite
198600	BBP12-UK-U-PWID	BBP12 Label printer 300 dpi - UK with Unwinder and Brady Workstation PWID Suite
195968	BBP12-US+U+CUTTER	BBP12 Label printer 300 dpi - US with Cutter and Unwinder
195568	BBP12-US+UNWINDER	BBP12 Label printer 300 dpi - US with Unwinder
306871	BBP12-US-U-C-LABS	BBP12 Label printer 300 dpi - US with Cutter, Unwinder and Brady Workstation LAB Suite
198601	BBP12-US-U-C-PWID	BBP12 Label printer 300 dpi - US with Cutter, Unwinder and Brady Workstation PWID Suite
306870	BBP12-US-U-LABS	BBP12 Label printer 300 dpi - US with Unwinder and Brady Workstation LAB Suite
198602	BBP12-US-U-PWID	BBP12 Label printer 300 dpi - US with Unwinder and Brady Workstation PWID Suite



The Basic Suite is included with every printer, all you need to do is download it. [Workstation.BradyID.com/Free](http://Workstation.BradyID.com/Free)



Quickly identify your products and wires with customised text or graphical labels, using serialised or imported data. [Workstation.BradyID.com/ProductandWire](http://Workstation.BradyID.com/ProductandWire)



Easily identify any sample with the most wanted laboratory sample label design apps in our Brady Workstation Lab suite. [Workstation.BradyID.com/lab](http://Workstation.BradyID.com/lab)

## Accessory

Article No.	Order Reference	Description
622201	BBP11/12 BLNK CORE	BBP12 and BBP11 blank ribbon core
361061	BBP12/BBP11-C	Cutter
361064	BBP12/BBP11-P&P	Peel and Present
361065	BBP12/BBP11-U	External Material Holder for BBP12 and BBP11

## BBP12 Printer kits

Article No.	Order Reference	Description
198588	BBP12-DATA KIT-EU	BBP12 Label printer 300 dpi - Datacom Kit - EU
198589	BBP12-DATA KIT-UK	BBP12 Label printer 300 dpi - Datacom Kit - UK
198590	BBP12-DATA KIT-US	BBP12 Label printer 300 dpi - Datacom Kit - US
198591	BBP12-ELEC KIT-EU	BBP12 Label printer 300 dpi - Electrical Kit - EU
198592	BBP12-ELEC KIT-UK	BBP12 Label printer 300 dpi - Electrical Kit - UK
198593	BBP12-ELEC KIT-US	BBP12 Label printer 300 dpi - Electrical Kit - US
198596	BBP12-LAB KIT-EU	BBP12 Label printer 300 dpi - Laboratory Kit - EU
198597	BBP12-LAB KIT-UK	BBP12 Label printer 300 dpi - Laboratory Kit - UK
198598	BBP12-LAB KIT-US	BBP12 Label printer 300 dpi - Laboratory Kit - US

**Africa**

Randburg, South Africa  
 Tel.: +27 11 704 3295  
 Email: africa@bradycorp.com

**Benelux**

Zele, Belgium  
 Tel.: +32 (0) 52 45 78 11  
 Email: benelux@bradycorp.com

**Central & Eastern Europe**

Bratislava, Slovakia  
 Tel.: +421 2 3300 4800  
 Email: central\_europe@bradycorp.com

**Denmark**

Odense  
 Tel.: +45 66 14 44 00  
 Email: denmark@bradycorp.com

**France**

Roncq  
 Tel.: +33 (0) 3 20 76 94 48  
 Email: france@bradycorp.com

**Germany, Austria & Switzerland**

Egelsbach, Germany  
 Tel.: +49 (0) 6103 7598 660  
 Email: germany@bradycorp.com

**Hungary**

Budaörs  
 Tel.: +36 23 500 275  
 Email: central\_europe@bradycorp.com

**Italy**

Gorgonzola  
 Tel.: +39 02 26 00 00 22  
 Email: italy@bradycorp.com

**Middle East FZE**

Dubai, UAE  
 Tel.: +971 4881 2524  
 Email: me@bradycorp.com

**Norway**

Kjeller  
 Tel.: +47 70 13 40 00  
 Email: norway@bradycorp.com

**Russia**

Moscow  
 Tel.: +7 495 269 47 87  
 Email: central\_europe@bradycorp.com

**Spain & Portugal**

Madrid, Spain  
 Tel.: +34 900 902 993  
 Email: spain@bradycorp.com,  
 portugal@bradycorp.com

**Sweden, Finland, Baltic states**

Kista, Sweden  
 Tel.: +46 (0) 8 590 057 30  
 Email: sweden@bradyeurope.com

**Turkey**

Istanbul  
 Tel.: +90 212 264 02 20 / 264 02 21  
 Email: turkey@bradycorp.com

**UK & Ireland**

Banbury, UK  
 Tel.: +44 (0) 1295 228 288  
 Email: uk@bradycorp.com

# Our mission is to identify and protect people, products and premises



To help minimise our impact on the environment, Brady limits its number of reprints.

Updated versions are always available for download on [www.bradyeurope.com](http://www.bradyeurope.com).

 Search for: EUR-M-177-EN



\*Y4953964\*

Your distributor

08/04/2021