

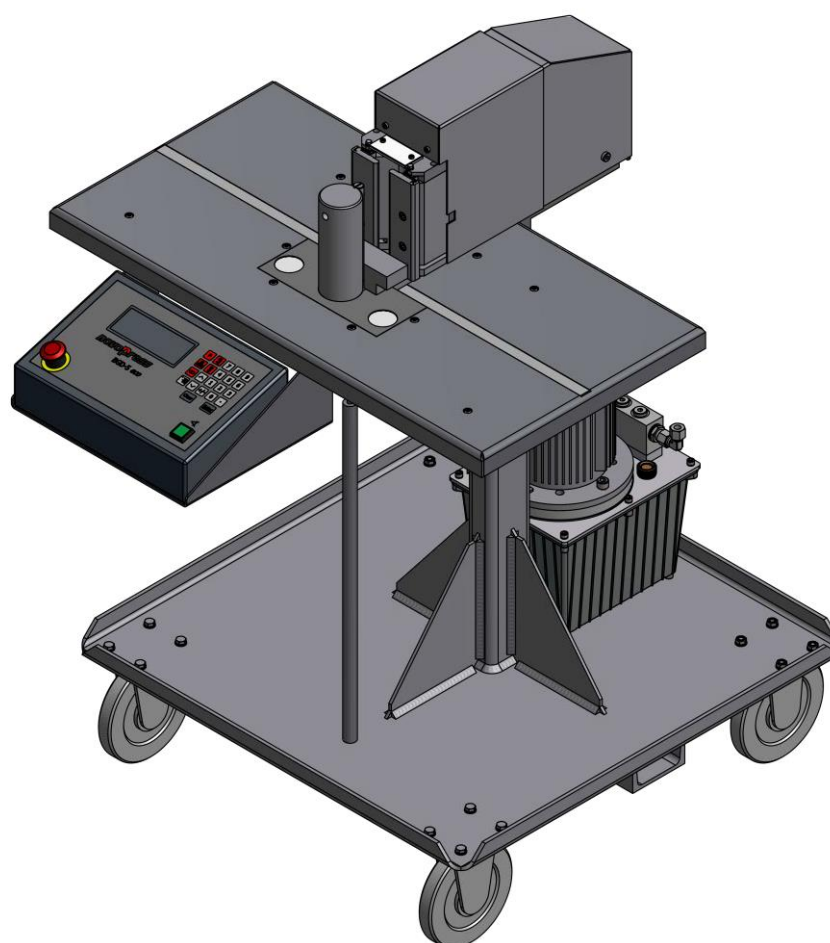
**Spare parts lists and  
Repair reference notes**

**for**

***novopress***

**Bending Table**

**BGD-5 eco**







**Table of contents**

	Page
<b>Spare parts lists</b>	
Spare parts lists.....	1
42380 BGD-5 eco .....	2
Electrical equipment / cable .....	6
43130 Bending base unit assy.....	7
43252 Piston assy.....	8
42913 Controller BGD-5 eco assy. with mount.....	9
04210 Bending Tool assy.....	10
43255 Swivel arm assy. ....	11
42690 Measuring unit assy. ....	12
 <b>Repair reference notes</b>	
 Exchanging the measuring unit.....	13
Adjustment of proximity switch.....	13
Exchanging the return flow valve BGD assy.....	14
Exchanging the draw wire sensor assy.....	15
Removing air from the BGD-5 eco hydraulics.....	16
 <b>Wiring and hydraulic diagrams</b>	
 Wiring diagram controller .....	17
Hydraulic diagram HA3 BGD.....	19

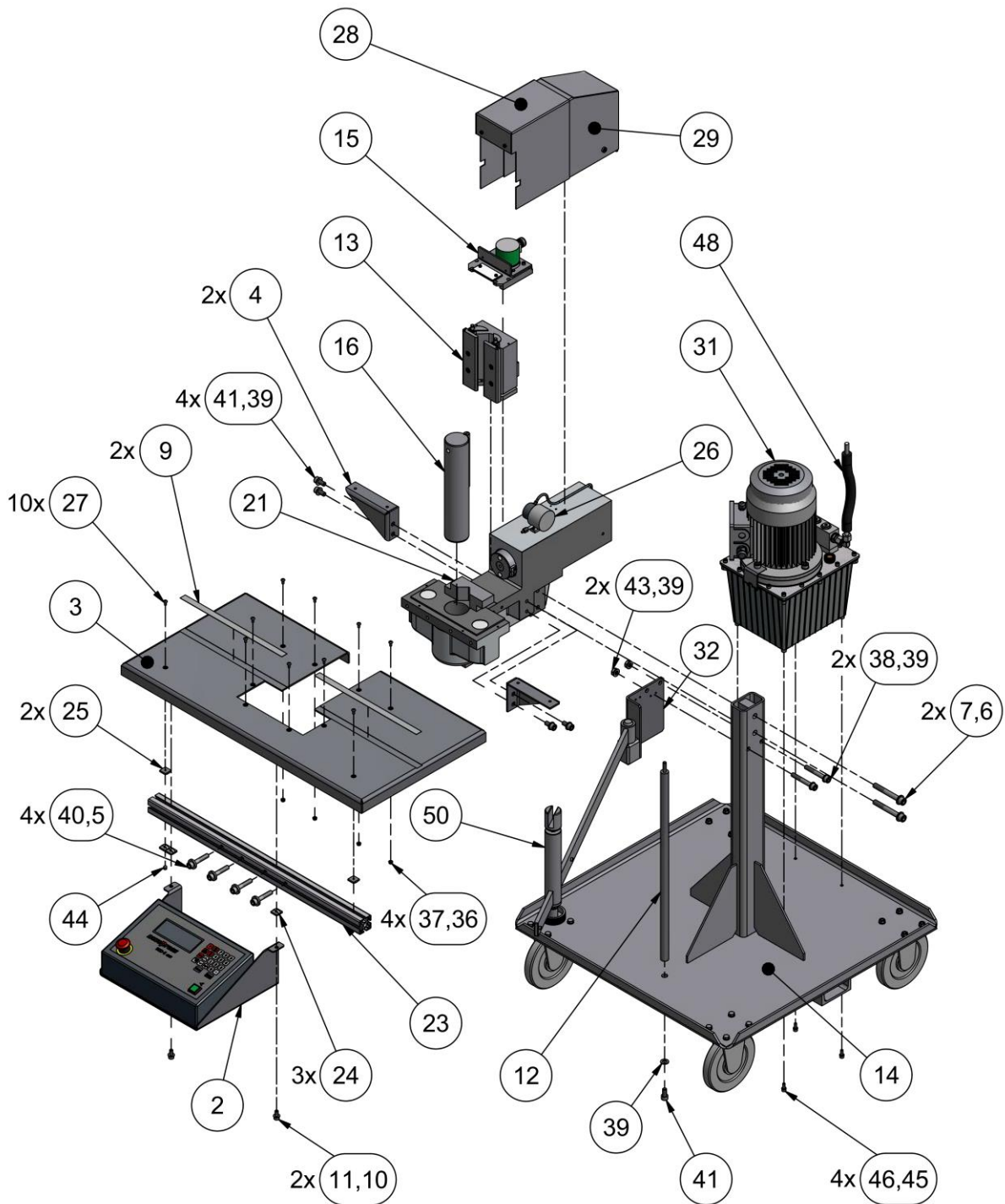


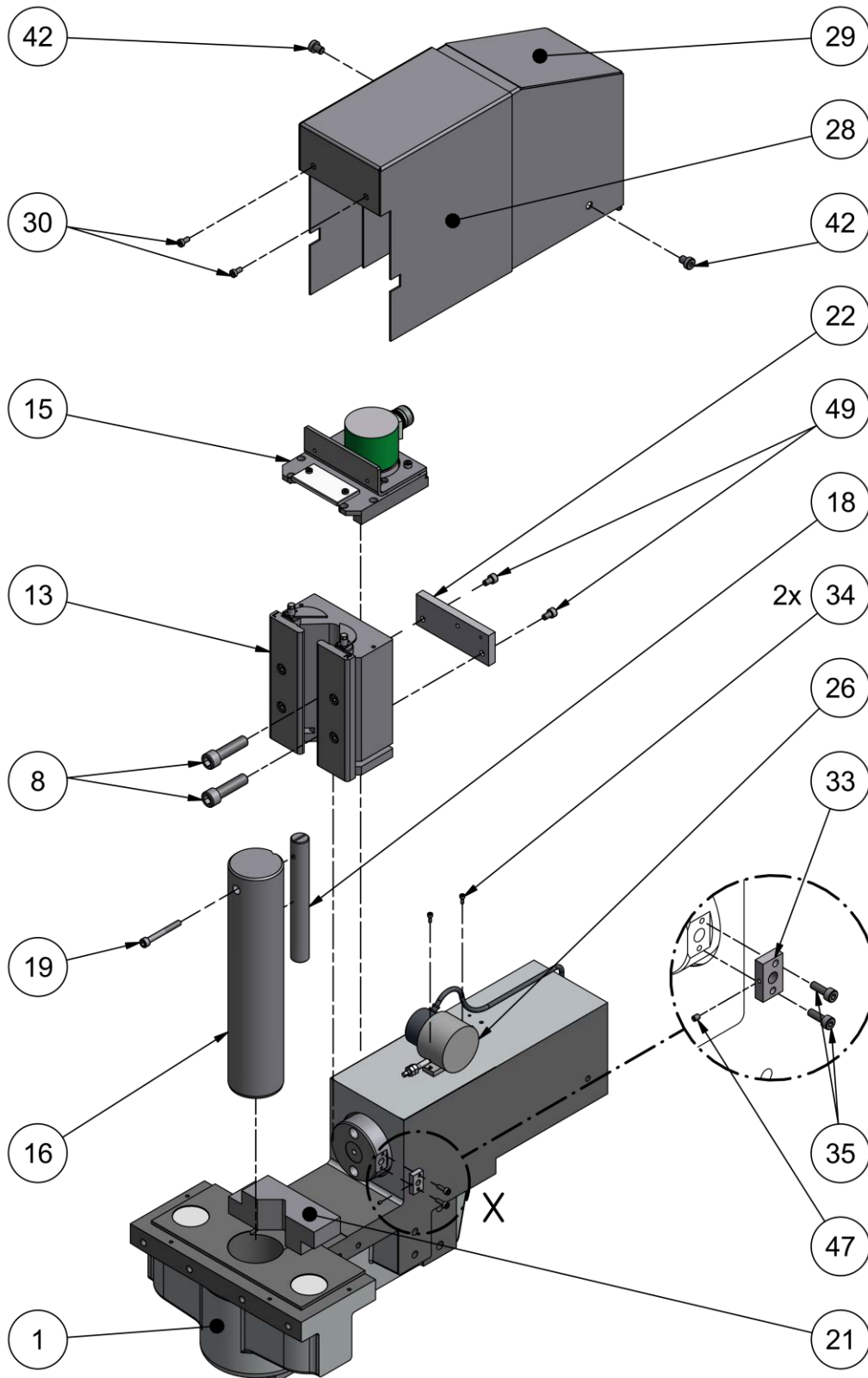




# Spare parts lists

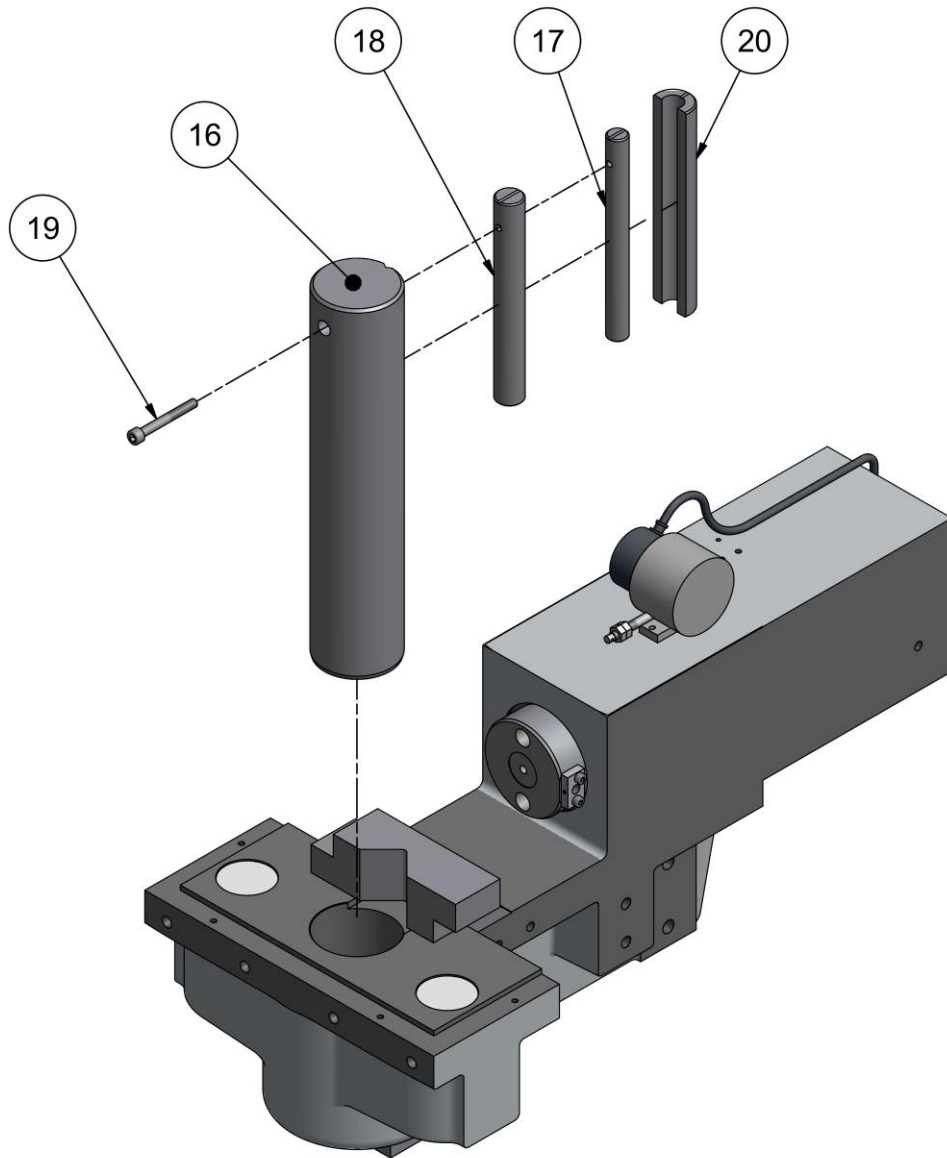
42380

BGD-5 eco





 old Version	<p><b>Pos.26 Draw wire sensor assy.</b></p> <p>With the old Version see note for repair → <b>Exchanging the draw wire sensor assy.</b> ←</p>	 old Version
--	--	--



Item	ID	Qty.	Description	Order no.
1		1	Bending base unit assy.	43130
2		1	Controller BGD-5 eco assy. with mount	42913
2	51	1	Controller BGD-5 eco assy. with mount 60Hz	42913
3		1	Table	42247
4		2	Table mount	42248
5		4	Washer A10,5	11175
6		2	Washer A13	11207
7		2	Cylinder screw M12x90	13689
8		2	Cylinder screw M12x45	11247
9		2	Measuring rule	13377
10		2	Washer A8.4	11174





Item	ID	Qty.	Description	Order no.
11		2	Cylinder screw M8x16	11313
12		1	Support	30833
13		1	Bending Tool assy.	4210
14		1	Carriage	31130
15		1	Measuring unit assy.	42690
16		1	Bending mandrel assy.	7432
17		1	Bending radius R7,5	3136
18		1	Bending radius R10	1881
19		1	Cylinder screw M6x50	11530
20		1	Bending radius R15	5724
21		1	Control rail	30843
22		1	Engaging piece	42717
23		1	Table reinforcement	42774
24		3	Threaded plate E M8	17308
25		2	Threaded plate E M5	17307
26		1	Draw wire sensor assy.	42914
27		10	Fillister head screw M5x10	17315
28		1	Front carriage	42892
29		1	Rear carriage assy.	44211
30		2	Cylinder screw M5x10	11718
31		1	HA3 BGD 400V / 50Hz 3P+N+PE	43704
31	51	1	HA3 BGD 220V / 60Hz 3P+N+PE	43704
31	133	1	HA3 BGD 400V / 60Hz 3P+N+PE	43704
32		1	Swivel arm holder	43059
33		1	Proximity switch mount	42995
34		2	Cylinder screw M3x8	12377
35		2	Cylinder screw M4x12	12460
36		4	Washer A5.3	11066
37		4	Hexagonal nut M5	11065
38		2	Cylinder screw M10x70	11684
39		9	Washer A10.5	11251
40		4	Cylinder screw M10x55	17353
41		5	Cylinder screw M10x20	11281
42		2	Cylinder screw M8x10	11496
43		2	Hexagonal nut M10	11429
44		1	Grub screw M8x10	11155
45		4	Washer A6,4	11203
46		4	Cylinder screw M6x16	11095
47		1	Grub screw M3x4	12770
48		1	Hydraulic hose	15007
49		2	Cylinder screw M6x10	11270
50		1	Swivel arm assy.	43255

Electrical equipment / cable



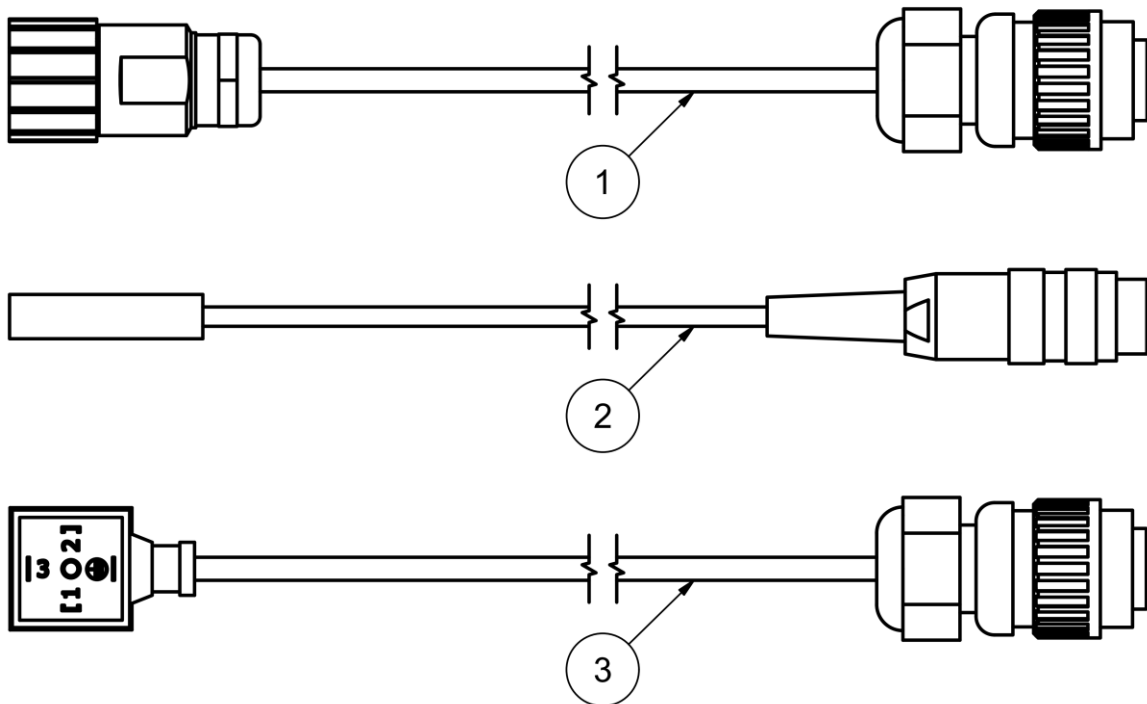
**ATTENTION!**

**Damage of the bending table while replacing connections.**

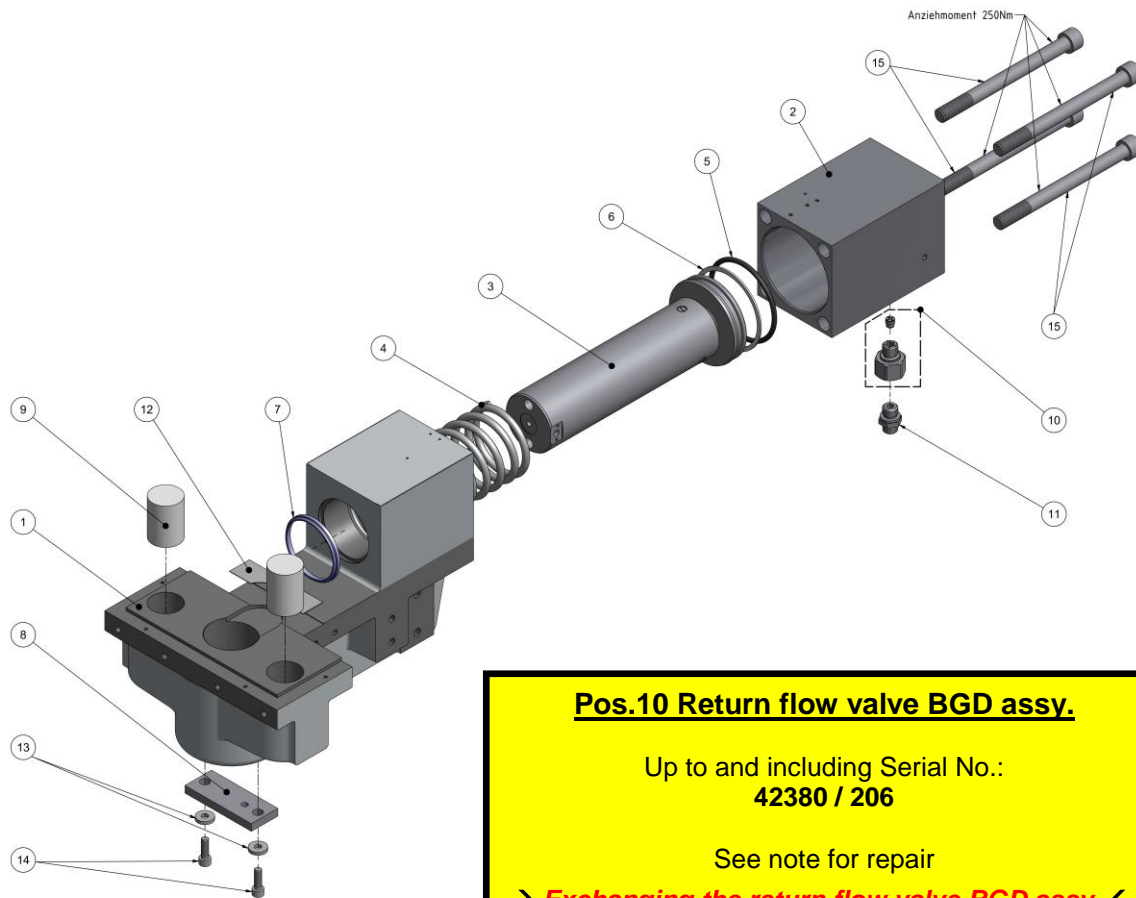
The sensors might be damaged.

Therefore:

- Always switch off and unplug the bending table while replacing connections or electrical components.



Item	ID	Qty.	Description	Order no.
1		1	Connection Rotary encoder assy.	42915
2		1	Proximity switch assy.	42916
3		1	Connection valve assy.	42917

**43130 Bending base unit assy.**

**Pos.10 Return flow valve BGD assy.**

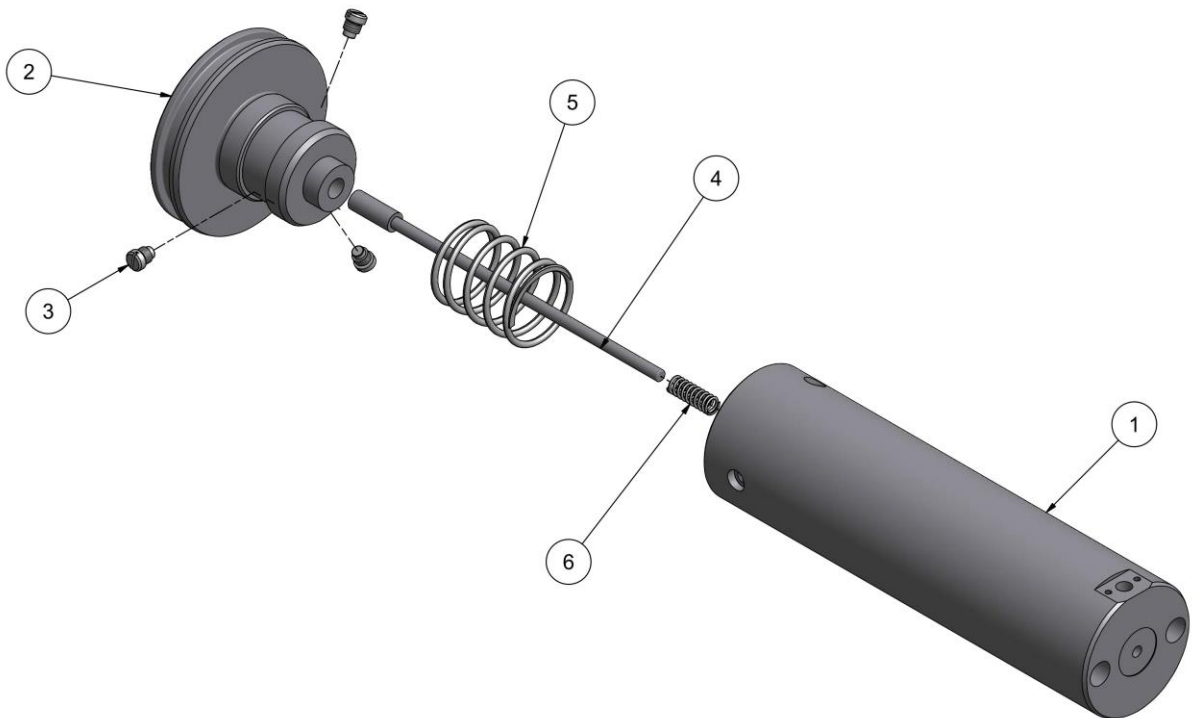
Up to and including Serial No.:  
**42380 / 206**

See note for repair

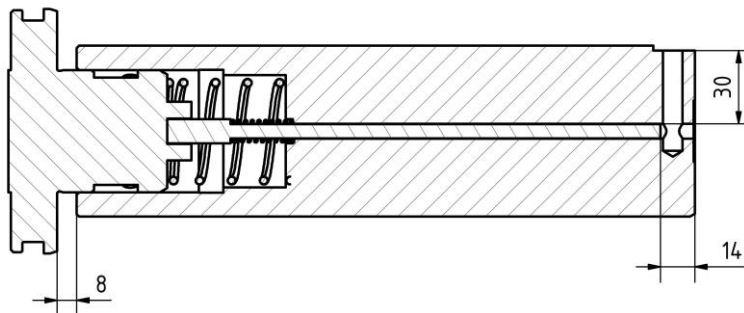
→ **Exchanging the return flow valve BGD assy.** ←

Item	ID	Qty.	Description	Order no.
1		1	Bending table body	42912
2		1	Cylinder	39805
3		1	Piston assy.	43252
4		1	Pressure spring	8279
5		1	O-Ring	13343
6		1	Bearing ring	13344
7		1	Scraper	13229
8		1	Bending mandrel mount	7437
9		2	Sealing plug	31755
10		1	Return flow valve BGD assy.	46055
11		1	Straight threaded joint	13221
12		1	Measuring rule	31624
13		2	Washer A8,4	11230
14		2	Cylinder screw M8x25	11252
15		4	Cylinder screw M16x190	13230

43252 Piston assy.



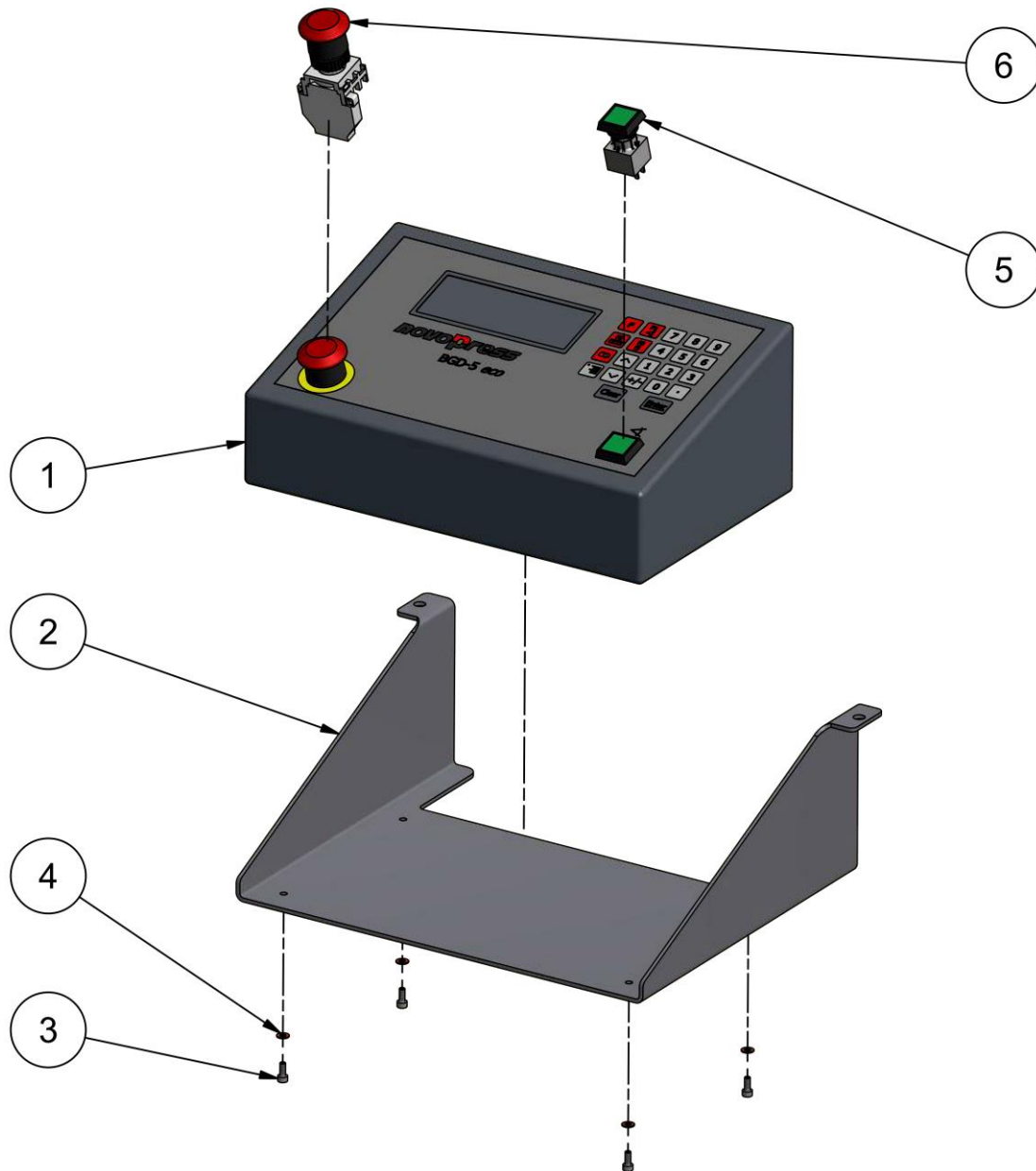
Sectional view



Item	ID	Qty.	Description	Order no.
1		1	Piston	8242
2		1	Guide piston	8243
3		3	Pan head screw	8341
4		1	Rod	42926
5		1	Pressure spring	13217
6		1	Pressure spring	13306

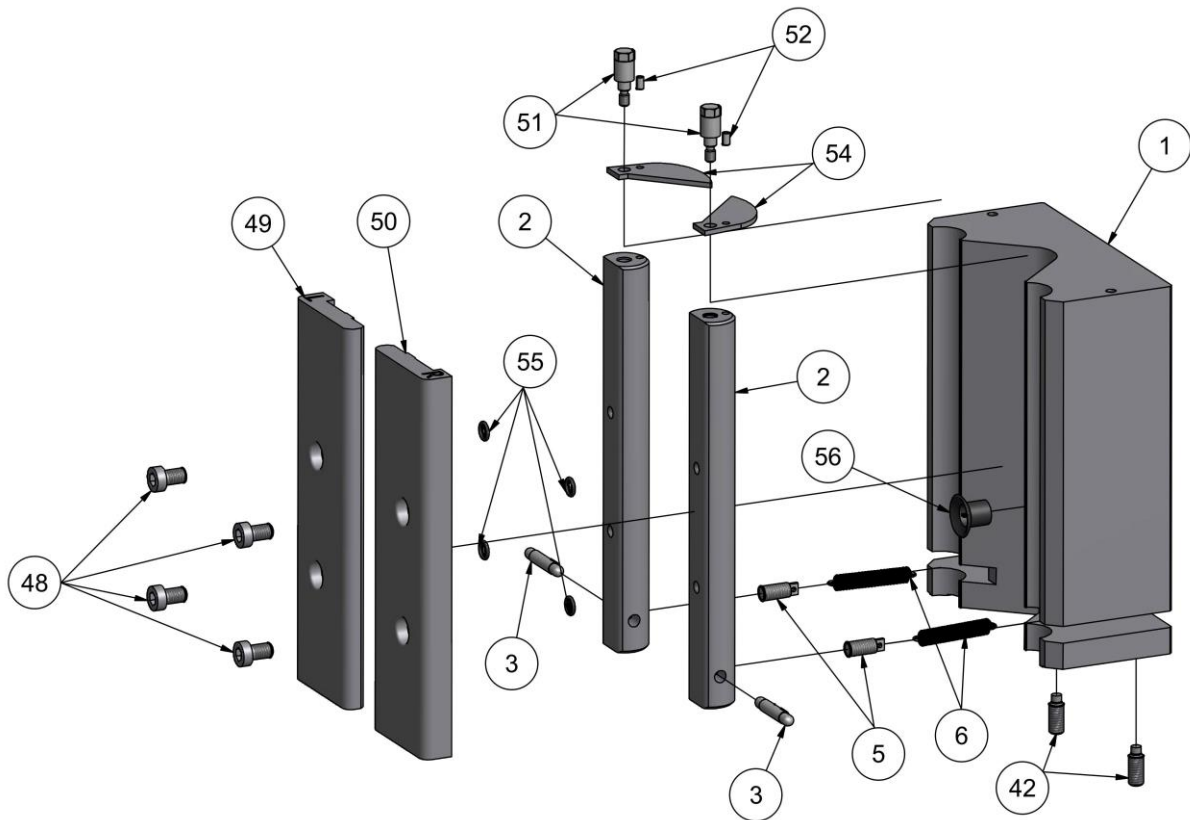


**42913      Controller BGD-5 eco assy. with mount**

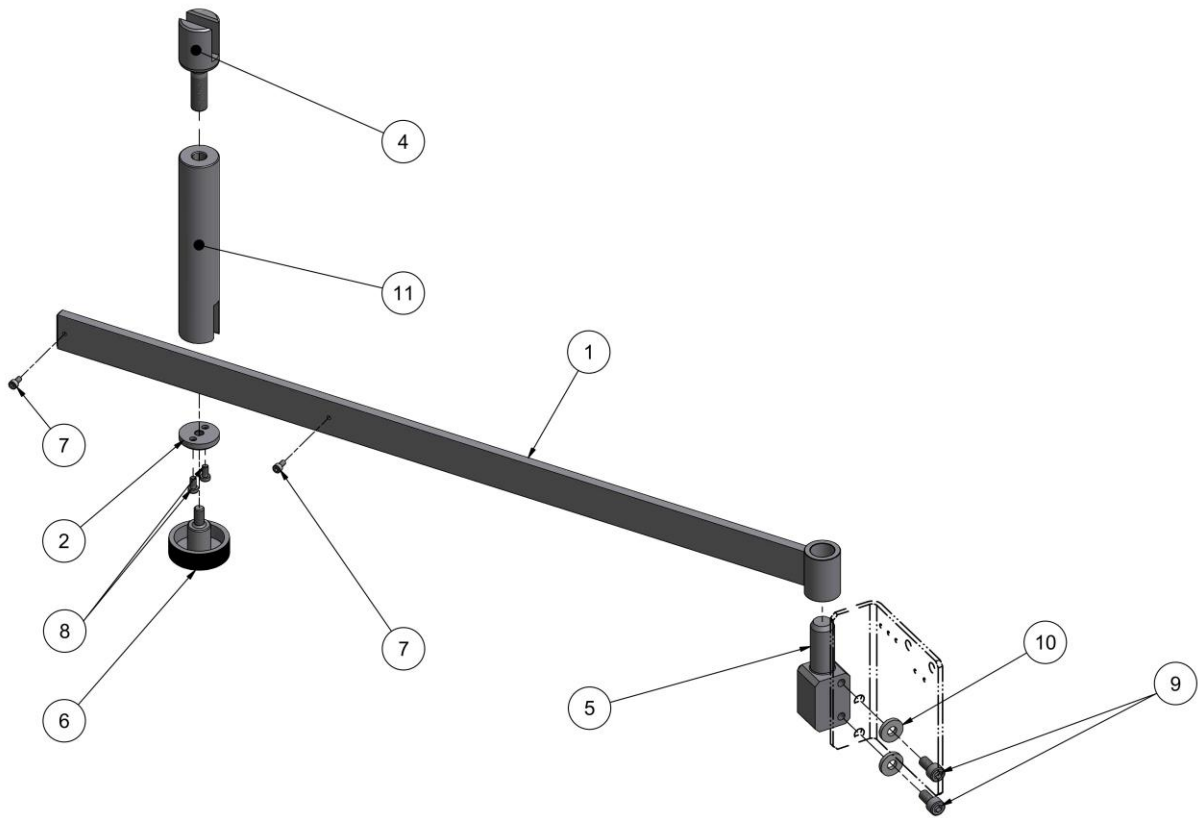


Item	ID	Qty.	Description	Order no.
1		1	Controller BGD-5 eco	17306
2		1	Controller retaining plate	42871
3		4	Cylinder screw M4x10	11124
4		4	Washer 4,3	12311
5		1	Bending button assy.	17755
6		1	Emergency off button assy.	17756

04210 Bending Tool assy.

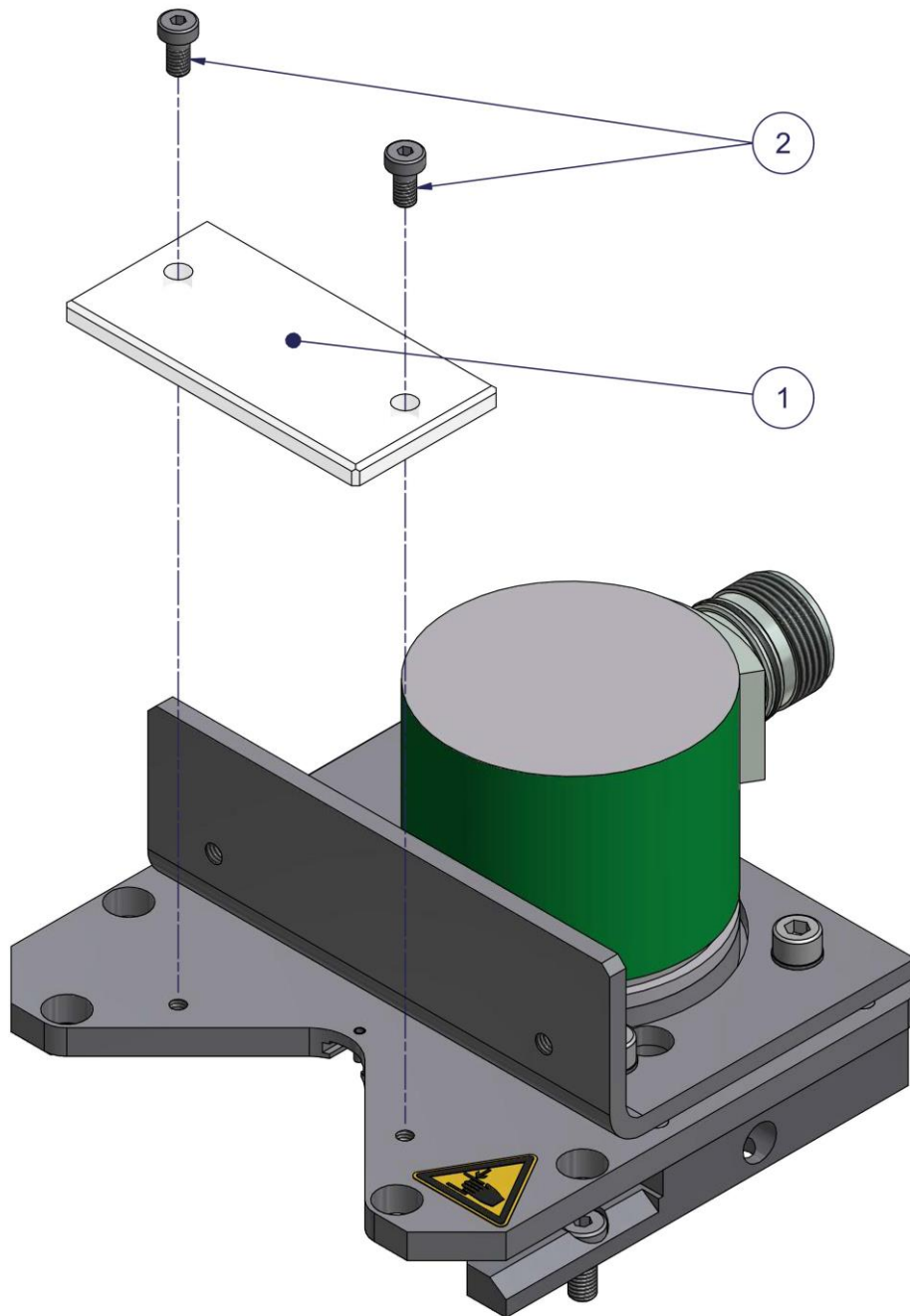


Item	ID	Qty.	Description	Order no.
1		1	Tool holder	4176
2		2	Thrust pad	4177
3		2	Pin	4244
5		2	Screw	1980
6		2	Tension spring	2176
11		1	Allen key A/F dimension 5	11715
42		2	Grub screw M6x16	11737
48		4	Cylinder screw M6x10	13512
49		1	Thrust pad left	30798
50		1	Thrust pad right	30799
51		2	Clamping screw	4704
52		2	Clamping sleeve	11575
54		2	Curve plate	4734
55		4	O-Ring	11714
56		1	Grip plug	17338

**43255 Swivel arm assy.**


Item	ID	Qty.	Description	Order no.
1		1	Swivel arm	43251
2		1	Retainer	39052
4		1	Fork	5641
5		1	Swivel arm	39045
6		1	Knurled handle	15066
7		2	Cylinder screw M5x10	11081
8		2	Cylinder screw M6x12	11069
9		2	Cylinder screw M10x20	11281
10		2	Washer A10,5	11175
11		1	Fork holder	39053

42690 Measuring unit assy.



Item	ID	Qty.	Description	Order no.
1		1	Guard plate	39335
2		2	Cylinder screw M4x8	12070



# Repair reference notes



## WARNING!

**Danger of injury during cleaning or maintenance operations by unintentional activation.**

Therefore:

- Always read safety information before conducting cleaning or maintenance operations and
- Always shut down machine and disconnect the plug from the power source.

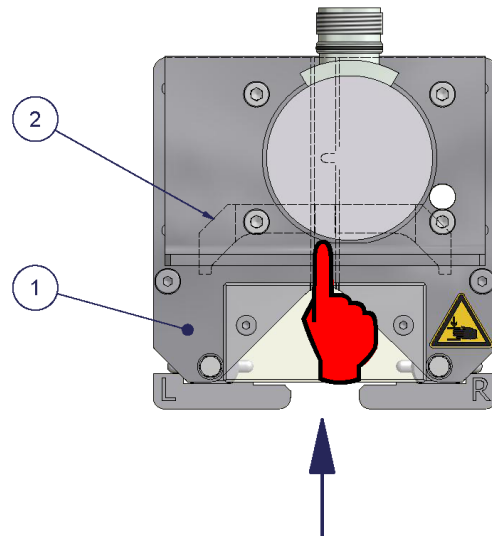
## Exchanging the measuring unit

To dismount the measuring unit:

1. Push the rocker (2) back and hold it there!
2. Remove the measuring unit (1)
3. Release rocker (2) slowly

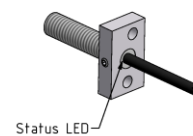
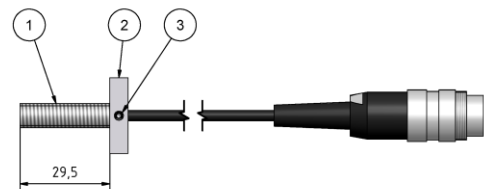
To mount the measuring unit:

1. Push the rocker (2) back and hold it there!
2. Insert measuring unit  
**Do not press it down**
3. Release rocker (2) slowly and fasten measuring unit



## Adjustment of proximity switch

1. Screw proximity switch (1) in Proximity switch mount (2) and adjust extend of 29,5 mm
2. Tighten grub screw (3) **slightly**

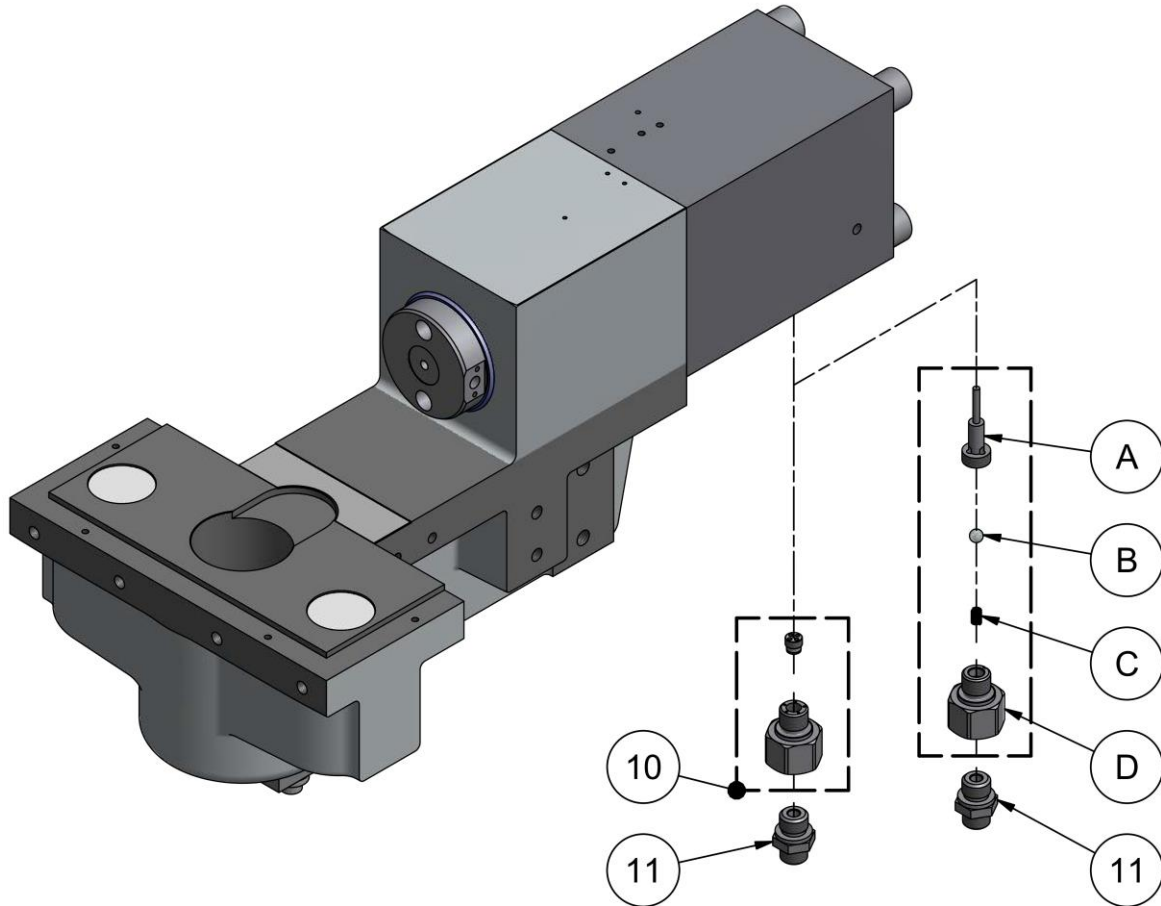


### Exchanging the return flow valve BGD assy.

**Conversion to the new return flow valve BGD assy. (46055):**

**Pos. A** Valve screw, **Pos. B** Ball, **Pos. C** Pressure spring and **Pos. D** Adaptor of the old version must be dismantled in the conversion and replaced by **Pos. 10** Return flow valve BGD assy..

**Pos. 11** Straight threaded joint is still needed.



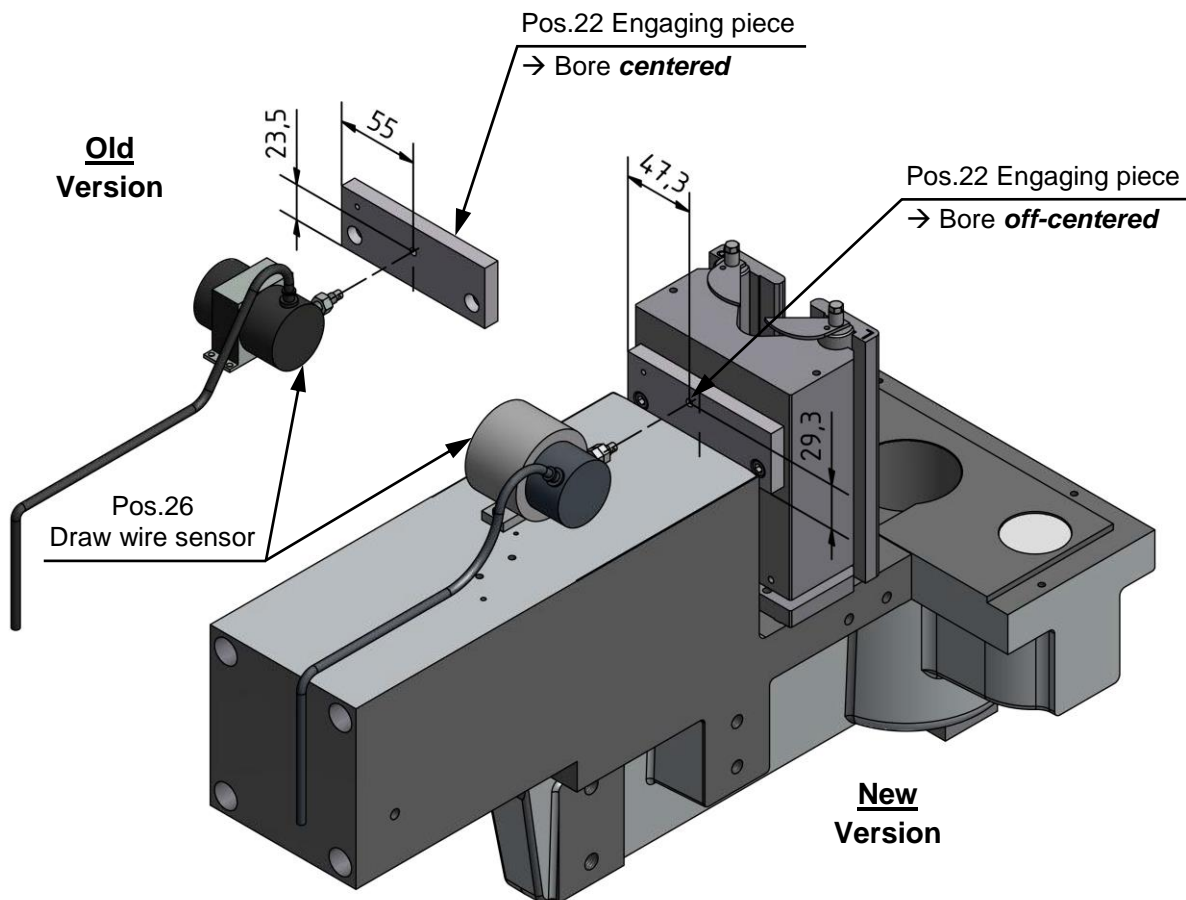
Assembling – List of parts				
Item	ID	Qty.	Description	Order no.
10		1	Return flow valve BGD assy.	46055
11		1	Straight threaded joint	13221

Disassembling – List of parts				
Item	ID	Qty.	Description	Order no.
A		1	Valve screw	8773
B		1	Ball	11210
C		1	Pressure spring	6631
D		1	Adaptor	9178

**Exchanging the draw wire sensor assy.**

**Conversion to the new draw wire sensor assy. (42914):**

The old version of the draw wire sensor must be removed together with the previous engaging piece (M6 Bore **centered**) and replaced by the new draw wire sensor together with the engaging piece (M6 Bore **off-centered**). For the assembling of the new draw wire sensor only 2 cylinder screws M3x8 (12377) are needed.



Assembling – List of parts				
Item	ID	Qty.	Description	Order no.
22		1	Engaging piece	42717
26		1	Draw wire sensor assy.	42914

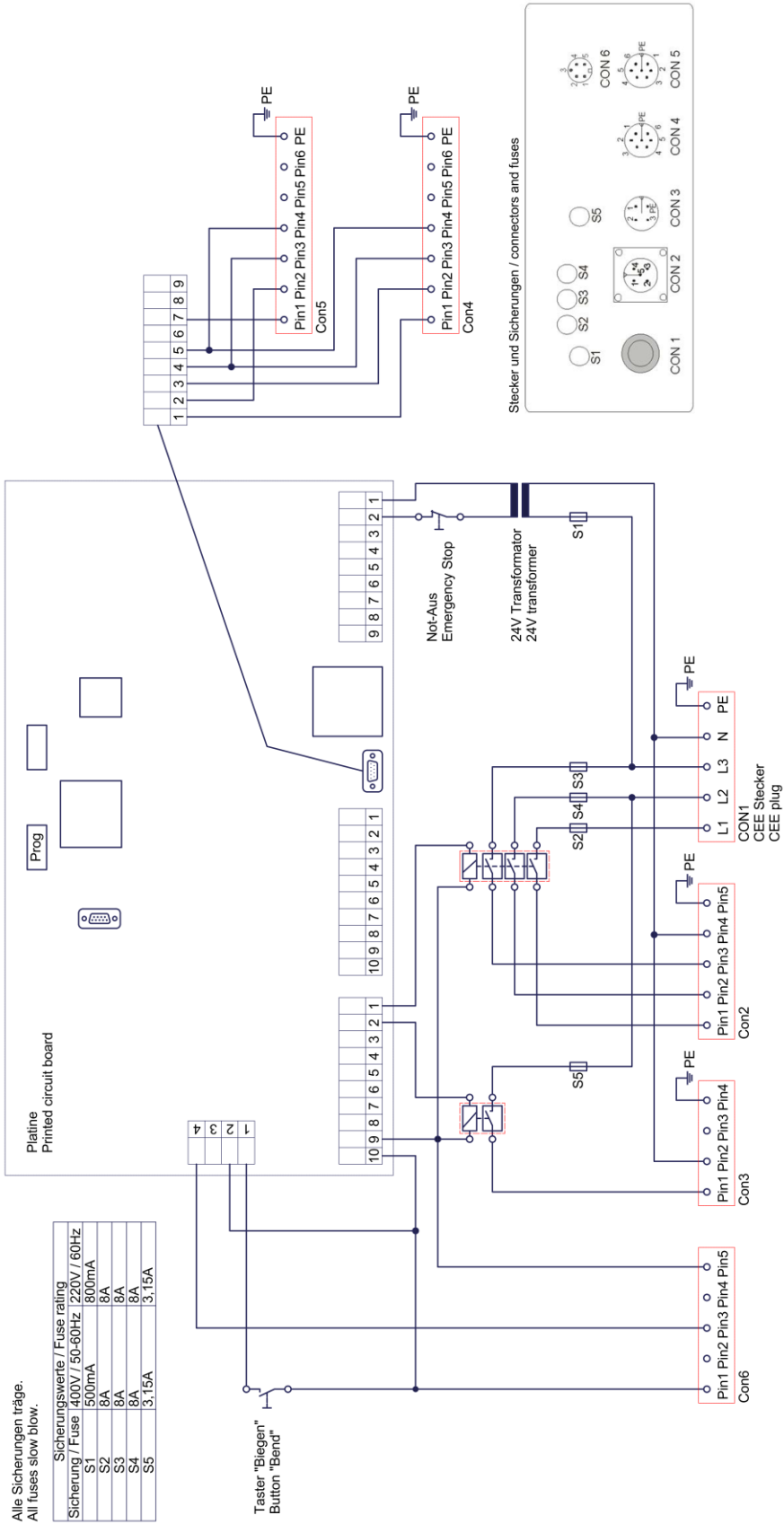
## Removing air from the BGD-5 eco hydraulics

After working on the hydraulic system of the bending table and after long periods of downtime, air has to be removed from the hydraulic system.

Proceed as follows:

- Switch bending table on and reference
- Pull out bending mandrel
- Enter **Stroke bending F2**
- Enter 90mm stroke distance
- Press the **Bend button** until the motor switched off
  - Wait until the tool holder is completely retracted
  - Repeat this procedure 10 times
- Reinsert bending mandrel

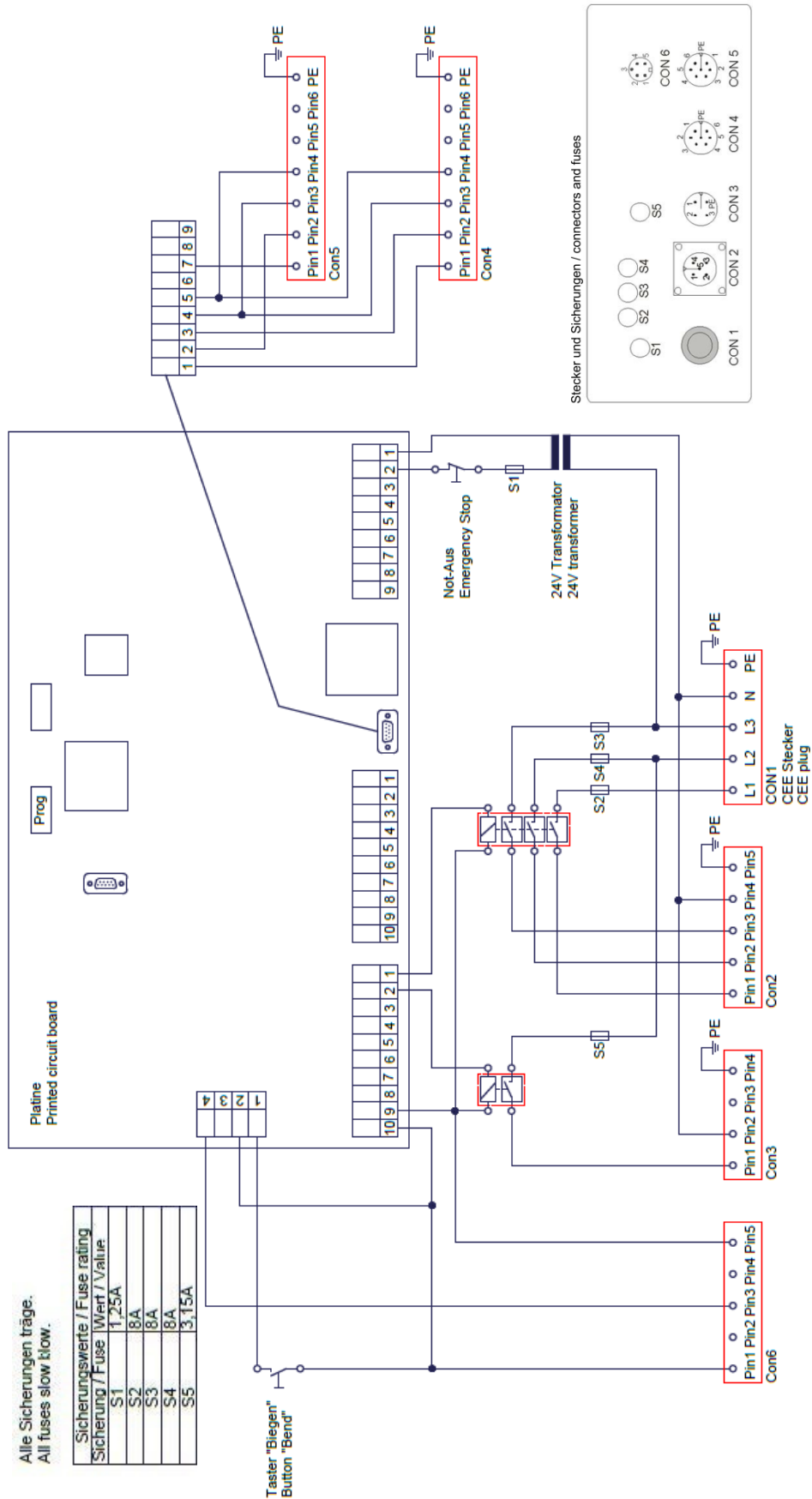
**Wiring diagram controller** up to unit no. 265



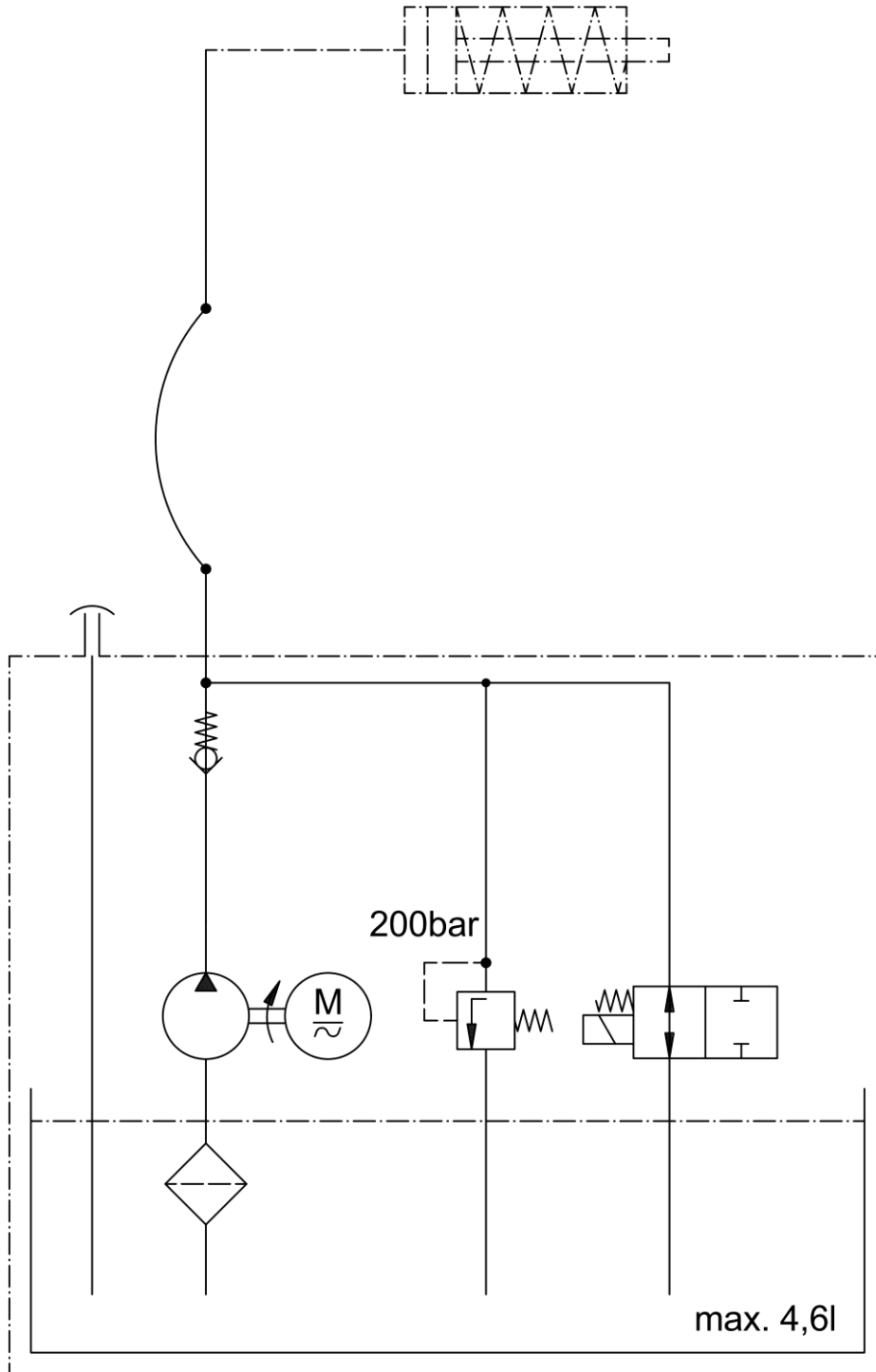
Alle Sicherungen träge.  
All fuses slow blow.

Sicherungswerte / Fuse rating
S1 500mA
S2 8A
S3 8A
S4 8A
S5 3.15A

**Wiring diagram controller** from unit no. 266



Hydraulic diagram HA3 BGD



Hydraulic unit HA3 BGD		
Frequency:	50 Hz	60 Hz
Delivery rate:	3,5 l/min	3,3 l/min
RPM:	2800 U/min	3300 U/min

Repairs / Service

**novopress**

**NELCO**

Nelco / Daléns gata 7 / 195 61 Arlandastad  
+46 (0)8 754 70 40 / [www.nelco.se](http://www.nelco.se)