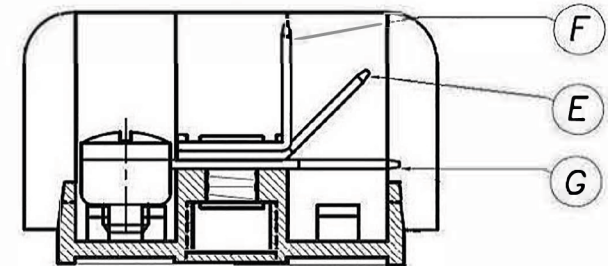
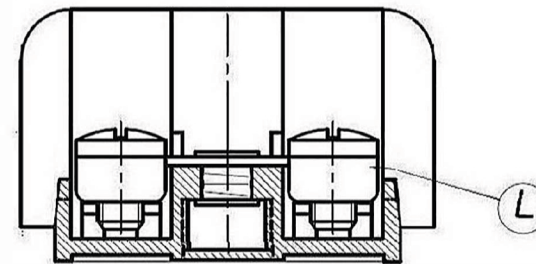


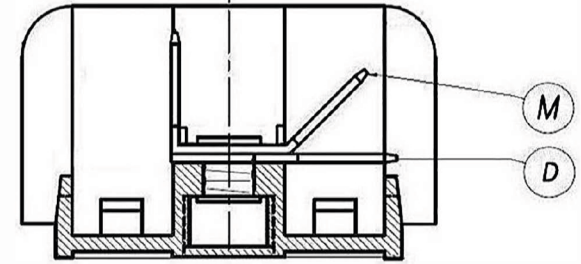
SEC. A-A



SEC. B-B



SEC. C-C



SEC. D-D

N°poles	L	I
1	30.4	22
2	41.4	33
3	52.4	44
4	63.4	55
5	74.4	66
6	85.4	77
7	96.4	88
8	107.4	99
9	118.4	110
10	129.4	121
11	140.4	132
12	151.4	143
13	162.4	154
14	173.4	165
15	184.4	176
16	195.4	187

CONNECTION ELEMENTS	
A	bipolar faston-faston 0°
B	bipolar faston-faston 45°
C	bipolar faston-faston 90°
D	unipolar faston 0°
E	unipolar faston 45°
F	unipolar faston 90°
G	screw-faston 0°
H	screw-faston 45°
I	screw-faston 90°
L	screw-screw
M	bipolar faston-faston 45°/90°
R	rivet

MATERIAL OF THE PLASTIC BODY	GREY POLYPHENYLENE UL94V1										
MATERIAL OF THE CONNECTION ELEMENTS	OT67 NICKEL PLATED - ZINC PLATED STEEL FOR OK501E										
MATERIAL OF THE RIVET	OT63										
from-to mm	0,1	6	6,1	40	40	150	150	300	300	1000	
tolerances	± 0,1		± 0,2			± 0,30		± 0,40		± 0,60	
NAME OF THE PRODUCT	OK501 & OK501E										
DATE	20.04.'15										