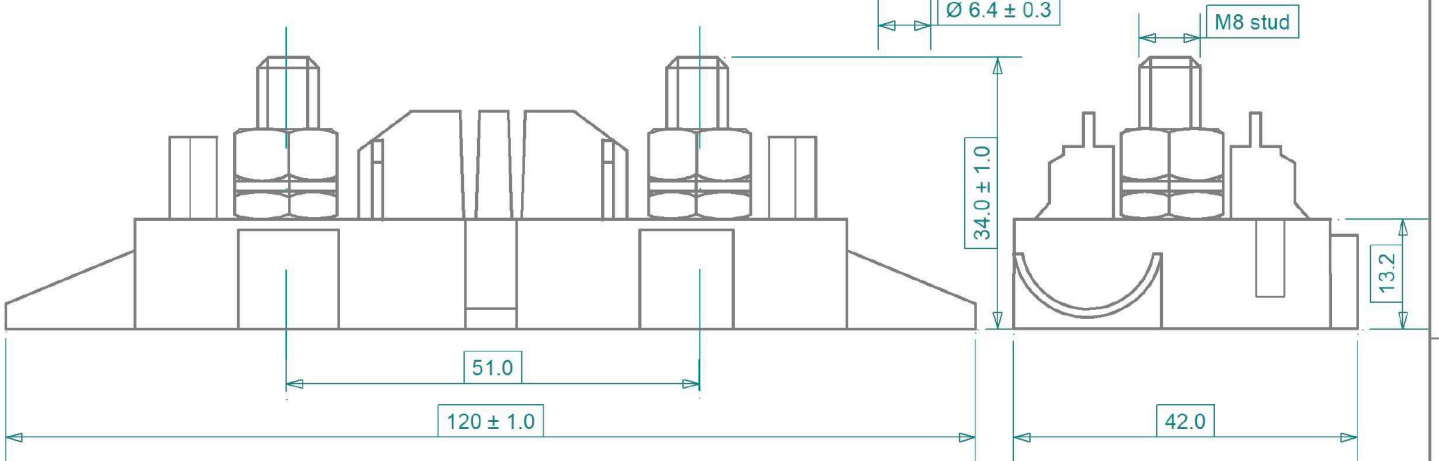
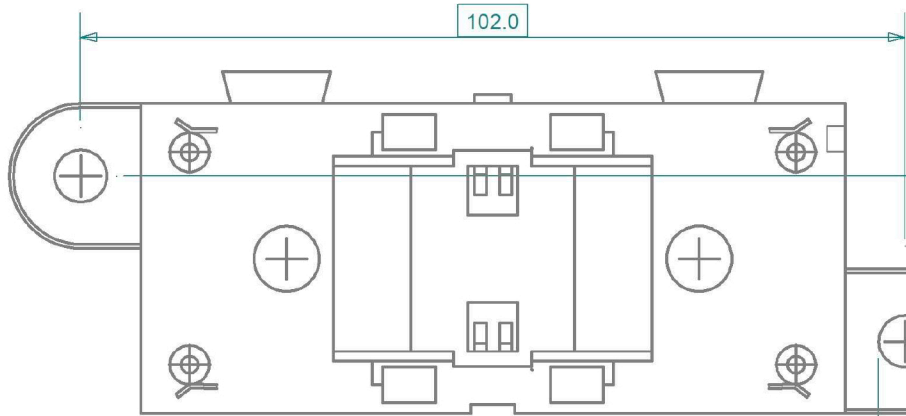
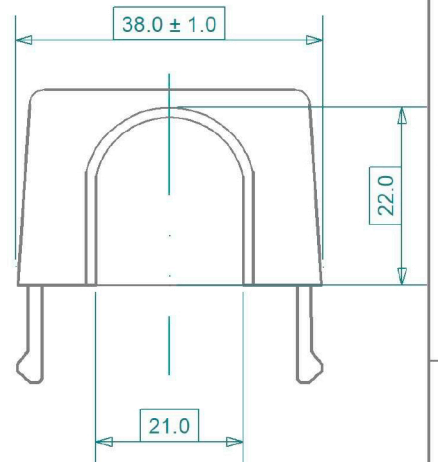
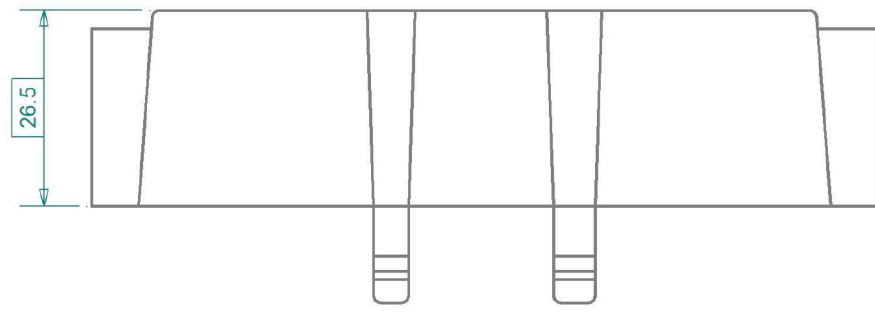


**NOTES:**  
 Base material PA6.6FR GF30, UL94 V0, color black  
 Cover material PA6FR, UL94 V0, color black  
 Integrated flexible latch Cover - Holder  
 2 x M8 stud to install megaOTO fuse  
 For system voltages between 32 and 70 VDC,  
 mount holder on insulating base (i.e. HIB1)  
 Fuse mounting torque ISO 8820-5: 12 ± 1 Nm



Revisions		Date	Appr.		
	Date	Type	Drawn	05/03	GRH
b	10/04	cover break sections added	Checked	07/24	BE
c	08/07	re-drawn	Standards		
d	06/10	added cable hole dimensions	Approved	07/24	AdH
e	07/11	updated dimensions			
f	05/14	updated notes	Scale 1 : 1		Title
g	01/16	updated dim. + notes (new tool)	Projection	Tolerance	HMG1 series, megaOTO fuse holder
h	12/17	updated dimensions, new tooling		± 0.5 mm unless	Drawing type
i	04/24	updated mounting torque to ISO		otherwise noted	Drawing number
j	07/24	updated notes, higher VDC use			Sheet
					Layers / Sheet
					0 1 2 6 8 9 10 Sheet 01